

# R-F-M

## THE MIDLANDS MART

— RUGBYFARMERSMART.COM —

The Charolais Pavilion, Avenue M, Stoneleigh Park,  
Kenilworth, Warwickshire CV8 2RG  
02476 697731 | [www.rugbyfarmersmart.com](http://www.rugbyfarmersmart.com) | 43/139/8013  
Office hours: Monday to Friday - 9.00am - 5.00pm  
Opening Time: Gates open at 5.30am until further notice

## MARKET REPORTS FOR MONDAY 9TH AUGUST 2021

### MARKET AT A GLANCE

**Prime Steers to 265p/kg & £1720**  
**Prime Heifers to 270p/kg & £1797**  
**Prime Bulls to 224p/kg & £1761**  
**OTM Cattle to 186p/kg & £1633**  
**Prime Lamb SQQ 237p/kg (1878 Avg £99)**  
**Prime Lambs to 300p/kg & £137**  
**Ewes to £149 (566 Avg £102)**  
**Calves to £360 (40)**



## THURSDAY 19TH AUGUST MORNING SALE OF STORE SHEEP FOLLOWED BY STORE CATTLE

Catalogues & Entry Forms available by post, email or on the website  
[www.rugbyfarmersmart.com](http://www.rugbyfarmersmart.com) | [admin@rugbyfarmersmart.com](mailto:admin@rugbyfarmersmart.com)

## CATTLE: 87 FORWARD



Numbers tight but quality much better than we have seen and in all honesty a trade unseen with returns for quality on show well in advance of any we have witnessed all Accounts wanting cattle but some just left in the wake of an unstoppable trade.

### Steers;

Weight and meat all about. Trade though reflecting saleable yield and topping out at 265p/kg for a 14 month old sweet meat from PM Jarrom with Piedmontese from M A Collins to 261p/kg others 257 and 255p/kg. R Grades to 247p/kg and 243p/kg. O+ to 222p/kg. In the lump £1720 with weight from PC & RA Nichols with Limousin £1675 from Pete Jarrom.

### Heifers;

Real quality and finish to see 270p/kg for U+ from RW & HER Trivett ahead by a whisker of JB HM & J Gilbert at 268p/kg. Others 266p/kg and 263p/kg at U grades. R Grades to 248p/kg and plenty in the 240p/kg mark. Top gross £1796 to Messrs Gilbert with £1791 to Messrs Trivett who also had £1655 ahead of Messrs Kennealy at £1651.

### Bulls;

Many more wanted and seeing £1761 for C H Evans with Simmental.

### Cows;

Numbers very short but seeing 186p/kg for meat R Grades from Messrs Gilbert with a top of £1412. Cull Bulls to 136p/kg and £1633 from AEJ & FJ Claridge, Buckingham

***Auctioneer: Tom Wrench***

## STEERS & BULLS

Top prices per Head				FA
Simmental (bull)	786kg	£1761	C H Evans & Son	Y
Simmental	780kg	£1720	PC & RA Nichols & Son	Y
Limousin	632kg	£1675	P M Jarrom	Y
Charolais x	756kg	£1663	PC & RA Nichols & Son	Y
Simmental	720kg	£1598	B T Caswell & Son	Y

Top prices per Kilo				
Limousin	632kg	265ppk	P M Jarrom	Y
Piedmontese	558kg	261ppk	M A Collins	Y
Limousin	628kg	247ppk	P M Jarrom	Y
Aberdeen Angus	684kg	233.5ppk	TV & J Kennealy	Y
Simmental	668kg	227.5ppk	B T Caswell & Son	Y

## HEIFERS

				FA
Top prices per head				FA
Limousin	670kg	£1796	JB HM & J Gilbert	Y
Limousin	663kg	£1790	RW & HER Trivett	Y
Limousin x	622kg	£1655	RW & HER Trivett	Y
Limousin	664kg	£1650	T V & J Kennealy	Y
Limousin x	596kg	£1567	P M Jarrom	Y
Top prices per kilo				
Limousin	663kg	270ppk	RW & HER Trivett	Y
Limousin	670kg	268ppk	JB HM & J Gilbert	Y
Limousin x	622kg	266ppk	RW & HER Trivett	Y
Limousin x	596kg	263ppk	P M Jarrom	Y
Limousin	664kg	248.5ppk	T V & J Kennealy	Y

**PLEASE COULD ALL VENDORS BOOK IN STOCK,  
EITHER BY A QUICK CALL, TEXT OR EMAIL THANK YOU!**

Office: 02476697731 | Email: [admin@rugbyfarmersmart.com](mailto:admin@rugbyfarmersmart.com) | Tom: 07774723758

## COWS

Top prices per head					FA
Charolais (bull)	1218kg	£1632	AEJ & FJ Claridge	Y	
Limousin (bull)	1152kg	£1567	C D Harrison & Sons	Y	
Limousin x	866kg	£1412	TV & J Kennealy	Y	
Limousin x	742kg	£1380	JB HM & J Gilbert	Y	
Top prices per kilo					
Limousin x	742kg	186ppk	JB HM & J Gilbert	Y	
Limousin x	866kg	163ppk	TV & J Kennealy	Y	
Limousin (bull)	1152kg	136ppk	C D Harrison & Sons	Y	
Charolais (bull)	1218kg	134ppk	AEJ & FJ Claridge	Y	

## SHEEP:2559 FORWARD

### SPRING LAMBS:1880

### FORWARD SQQ 237P/KG AVG £99

1880 lambs forward today but weather seeming not to be favouring the lambs with quality very varied and some lambs drawn very early. An Sqq 237p/kg representing a comparison so far in front of deadweight comparison to be unfair. Best end lambs well chased but buyers lacking accounts today as sales are reported as very slow. Meat the order of the day and trading 20p/kg ahead of lean Lambs. Top today 282p/kg from N Walker, Burford at 37kg ahead of Derbyshires N Redfern 41kg to 283p/kg. IM Allen & Partners, Leicester 270p/kg. Small best lambs for the Asian trade seeing 300p/kg for another Derbyshire man S Oakes at 300p/kg for 30kg and S J Lacey Leicester 31kg to £86. Heavies a nice trade with Butchers very keen for best end 50kg at 261p/kg for E Brain & Son, Stratford Upon Avon equal with 46kg from PD & DM Hopcraft. R D Green 49kg to 253p/kg. In the lump Export lambs to £116 for £41 from Redferns with £114.50 for 44kg from Humphrey Livestock and 43kg to £113 from JA Boulton. Top today £137 at 57kg from GJ Lawrence with Alison Pittom 53kg to £132.50 and E Brain & Son 50kg at £130.50. Lambs with meat well chased but thanks to our great team of buyers offering returns miles ahead of the dead.

*Auctioneer: Tom Wrench*

## SPRING LAMBS : UNDER 45.5kg SQQ 244p/kg

Per Kilo			
Beltex x	30.00kg	300ppk	S Oakes & Son
Texel x	37.00kg	282ppk	N Walker
Texel x	41.50kg	280ppk	D Redfern
Texel x	31.00kg	277ppk	S J Lacey
Texel x	31.00kg	273ppk	S J Lacey

Per HEAD			
Texel x	41.50kg	£116.00	D Redfern
Texel x	44.00kg	£114.50	Humphrey Livestock
Texel x	43.00kg	£113.00	J A Boulton
Texel x	42.00kg	£110.00	Culworth Grounds Farm Ltd
Texel x	44.00kg	£110.00	PD & DM Hopcraft

## SPRING LAMBS : OVER 45.5 kg

Per Kilo			
Charollais x	50.00kg	261ppk	E Brain & Sons Ltd
Texel x	46.00kg	261ppk	PD & DM Hopcraft
Charollais x	49.00kg	253ppk	R D Green & Son
Texel x	46.00kg	252ppk	PD & DM Hopcraft
Texel x	49.00kg	251ppk	Humphrey Livestock

Per HEAD			
Charollais x	57.00kg	£137.00	GJ Lawrence
Texel x	53.00kg	£132.50	A Pittom
Charollais x	50.00kg	£130.50	E Brain & Sons Ltd
Charollais x	52.00kg	£128.00	M J Woodward
Charollais x	55.50kg	£128.00	R J Batchelor

## YARDSMAN WANTED

Due to the continued Expansion of RFM, we seek a self-motivated Yardsman to take weekly charge of Sales and preparation of Sales yards.

Working predominantly within the Market the Candidates will be responsible for the smooth running of Sales from setup to the final cleaning and Sale conclusion.

Competence working with Stock is essential together with 'Can do' attitude. The Candidate should be detailed in their approach and able to work on their own initiative.

40 hours a week with flexitime.

To discuss in confidence please email [t.wrench@rugbyfarmersmart.com](mailto:t.wrench@rugbyfarmersmart.com) or Call Richard Ellis on 07973962887

## CULL EWES: 566 FORWARD



Less about and less meat in truth. A nice trade for weighted Ewes but lean and poor Ewes harder sold albeit at more money than grazers can operate at. Top today saw Charollais at £149 from N Deeley with weighted Texel to £146.50 and £146 with others £144 for N Deeley. Weighted white face regularly over £140. Heavy Suffolks to £141 from H Eadon. AC & RCW Turney £139. J & S Truelove £137. Most Suffolks trading over £120. Mules a slower trade but still £124 for John Minshull Ltd and £123 Turney. Most heavy Mules £110 plus and lightweight in and around £100. Trade remaining so buoyant for the timing of the season.

*Auctioneer: Tom Wrench*

### EWES

Texel x	£149	N Deeley	X Bred	£142.5	J & S Truelove
Texel x	£146.50	B C Burton	Texel x	£142	N Deeley
Texel x	£146	B C Burton	Suffolk x	£141	H Eadon
Texel x	£144	N Deeley	Texel x	£141	N Deeley
X Bred	£142.50	B C Burton	X Bred	£141	B C Burton

## STORE LAMBS: 112 FORWARD



Several more forward today reaching £94 for Charallais lambs from Johnson's of Southam which was their first venture to Rugby Market.

Overall the lambs averaged mid 80 across the board.

Our main Store Lamb sale is Thursday 19th August.

*Auctioneer: Tim Webster*

### TIMING

Prime Cattle 9:45am, Calves (bi-weekly) 11am  
Sunday deliveries strictly before 3pm

# CALVES: 40 FORWARD



Baby Calves : 40 Forward

A good show of fresh farmers calves forward and returning farmers enjoying high prices achieved with Rugby's packed ring of buyers.

Smith's from Bumblebee Hall commanded the top price today for a British Blue Bull Calf realising £360, not far behind at £350 were Messrs Hall & Son's from Bentley for a British Blue Bull & Messrs RC & J Mann & Sons from Norton Lindsey for a Simmental.

Next sale is on the 23rd August and are expecting similar numbers of Baby Calves but also 25 Reared Calves 5-6mo, details to follow.

If you have any entries for future sales or require a farm visit to market your stock to its full potential... please let me know 07437101163 or timwebster09@gmail.com

- British Blue Bulls £135 to £360
- British Blue Hfrs. £150 to £320
- Simmental Bulls. £210 to £350
- Simmental Hfrs. £240 to £260
- Limousin Hfrs. to £300
- Hereford Bulls. £250 to £290
- Hereford Hfrs. to £230
- Angus Bulls. to £260
- Angus Hfrs. £125 to £215
- Sussex Hfrs. £115 to £140
- Highland Hfrs. to £179
- Hols/Fr Bulls. £50 to £132

Auctioneer : Tim Webster



Your local, independent fuel supplier



Heating Oil



Gas Oil  
& Diesel



Lubricants  
& Additives



Superheat  
35



Fuel Tanks



AdBlue®



[www.rix.co.uk](http://www.rix.co.uk)



01675 419187

2018  
Gold  
Trusted  
Service  
★★★★★  
feefo





# RUGBY PRIMESTOCK SOCIETY



## 48<sup>th</sup> Christmas Show & Sale

### Monday 29<sup>th</sup> November 2021



Classes to include:

Cattle

Sheep

Produce

Butchers sausages & pork pies

Home baking    fruit cake & mince pies

Schedule and entry form available soon





# RUGBY PRIMESTOCK SOCIETY

## Monday 29<sup>th</sup> November 2021



### Home baking – Fruit Cake

#### Ingredients:

10oz (275g) currants	4 large eggs
6oz (175g) sultanas	2oz (50g) whole almonds, chopped
6oz (175g) raisins	1 scant tablespoon black treacle
4oz (100g) glace cherries, quartered	grated rind of 1 lemon
4oz (100g) ready to eat apricot, snipped into pieces	grated rind of 1 orange
2oz (mixed candied peel, finely chopped)	
3 tablespoons brandy	
8oz (225g) plain flour	To finish:
¼ teaspoon grated or dried nutmeg	Brandy to feed
½ teaspoon mixed spice	
8oz (225g) soft margarine or softened butter	
8oz (225g) dark muscovado sugar	

#### Method:

Begin this cake the night before you want to bake it. Measure the prepared fruits into a large bowl, mix in the brandy, cover and leave in a cool place over night.

Pre-heat the oven to 140° /275°F/Gas 1. Grease and line an 8in (20cm) deep round cake tin with a double layer of greased greaseproof paper.

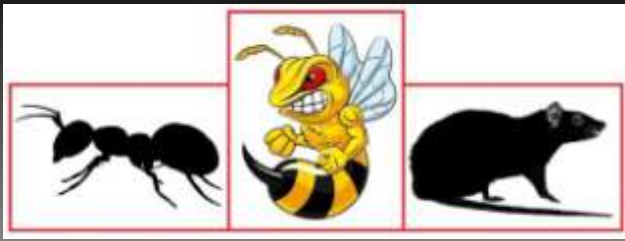
Measure the flour, spices, margarine or butter, sugar, eggs, almonds, treacle, lemon and orange rinds into a large bowl. Beat well to mix thoroughly, then fold in the soaked fruits. Spoon the mixture into the prepared tin and spread out evenly with the back of a spoon.

Cover the top of the cake loosely with a double layer of greaseproof paper.

Bake in the pre-heated oven for about 4-4 ½ hours or until the cake feels firm to the touch and a skewer inserted into the centre comes out clean. Allow the cake to cool in the tin.

When cool, pierce the cake at intervals with a fine skewer and feed with a little brandy. Wrap the completely cold cake in a double layer of greaseproof paper and again in foil and store in a cool place for up to 3 months, feeding at intervals with more brandy.

Leave undecorated.



# RDB Pest Control

Reliable | Trustworthy | Fast | Effective  
Competitive Prices

**Ryan Brunt**

**07922 091 459**

**[www.rdbpestcontrol.co.uk](http://www.rdbpestcontrol.co.uk)**

## **Why You Should Choose Us**

- ✓ Cater for Red Tractor and Farm Assurance Schemes
- ✓ Wide ranging experience on Farms with existing agricultural customers
- ✓ Member of Warwickshire Young Farmers
- ✓ Fully qualified - Level 2 RSPH in Pest Control
- ✓ Trustworthy and security vetted
- ✓ Prompt, reliable fast response

## **A selection of sites where I have experience:**

Police Sites • Local Airport • Farms • Warehouses • Offices  
• Industrial Estates • Food Premises • Private Houses  
Country Estates • Building Sites • Local Councils • Schools •  
Day Nurseries • Care Homes

## COMPLETE DISPERSAL SALE - CRICK

**ON INSTRUCTIONS FROM BRIAN & CAROL MAWBY WHO ARE  
RETIRING. A COMPLETE FARM DISPERSAL SALE OF TRACTORS,  
FARM MACHINERY & EQUIPMENT**

TO INCLUDE:

c. 1958 Fordson Major Diesel Barnfind Tractor c/w Winch (2,707 hours)

1955 Fordson Major Barn Find Tractor c/w Scraper and second spool valve.  
Two owners from new.

1987 Land Rover Defender 110 Diesel, Long Wheel Base Pickup.  
(107,791 miles). One owner from new.



The sale will also include Antique Farm Equipment, Grassland Equipment,  
Livestock Machinery Equipment and Agricultural Requisites.

Additional Farm Machinery & Equipment lots are being accepted.

Anticipated entry approximately 450 Lots

**FOR SALE BY AUCTION ON SATURDAY 14TH AUGUST AT 10.30AM.  
COTTAGE FARM, CRICK, NORTHAMPTONSHIRE. NN6 7SQ.**



## AUTO GATES LTD

Bridge Farm, Holt Lane, Ashby Magna, LE17 5NJ

Trevor 07498993897/01455 202791

Email: [tjautogate@gmail.com](mailto:tjautogate@gmail.com)

Fitted to new or existing gates, wood or steel automated.

Sliding, swinging or cantilever.

## **FARM SALE SATURDAY 11TH SEPTEMBER ON BEHALF OF R & AE WALLBANK, SHREWLEY**

**Sale of Dairy, Machinery, Deadstock & Chattels  
Also this day entries taken for an Open Collective Sale.  
Entry forms for this can be found on our website or call  
the office on 02476697731 if you require one posting.**

**More information to follow soon**

### **DROVERS WANTED**

To work every Monday including bank holidays

Experience with livestock preferred must be able to work as part of a team.

To find out more details please call Sophie on 02476 697731 or email

[admin@rugbyfarmersmart.com](mailto:admin@rugbyfarmersmart.com)

# Farm insurance, the way it should be

We're a family-run business and pride ourselves on forging long term relationships with our farming and agricultural clients. Covering the Midlands, South West and South East, we deliver an extensive range of farm, agri business and equine policies tailored to you.

[www.county-insurance.co.uk/farms](http://www.county-insurance.co.uk/farms)

Farm & Equine **01865 844985**

General **01865 842084**

 Follow us @County\_Farm



Independent Insurance Brokers County Insurance Services Limited. Address and Registered Office: County House, Glyme Court, Langford Lane, Kidlington, Oxon OX5 1LQ. Authorised and regulated by the Financial Conduct Authority (FCA) (FRN: 597267). Company registered in England No. 08411634

An exciting and unique opportunity for a flock manager has become available on a sheep dairy unit in North Warwickshire. This family run business is looking a team member to manage and expand their 350+ dairy sheep enterprise. The successful candidate will have a proven track record in sheep husbandry along with the ability to manage the flock on a day to day basis. As part of the team they will be involved in management decisions and given the opportunity to make their own stamp on the business. Duties will include milking, lambing, care of new-born lambs, feeding and all associated livestock duties. Tractor driving skills for feeding and bedding will be an advantage as well as a full driving licence.

All training for milking and milk hygiene will be given on the job but an ability to learn and attention to detail is essential.

A competitive salary is on offer and pension along with a 2-bedroom cottage with large garden is available on the farm at a nominal rent.

Please call Paul on 07796 611200 for further details

## FOR SALE

Pedigree Blonde Bull

Call 01789266908  
(b1459)

# WE COVER SMALL FARMS, LARGE FARMS AND EVERYTHING IN BETWEEN



From sheep farmers to arable farmers.  
Flower growers to poultry farmers.

NFU Mutual is proud to insure over 75% of UK farms with our Farm Select insurance. But we want more farms to benefit from great cover and local service. NFU Mutual has introduced Farm Essentials insurance - designed to meet the needs of smaller farms.

As your local agency, we are close by and can provide expert advice and hands-on support when you need it.

Call **Coventry Office** on **02476 444519**  
NFU Mutual, 6 Eastwood Business Village,  
Harry Weston Road, Binley Business Park,  
Coventry, CV3 2UB



**NFU Mutual**  
FARM INSURANCE



**J B BARNETT**  
**07506419043**

CULTIVATING IDEAS FOR GROWTH

Aspects of contracting Available:

- Mowing
- Tedding
- Raking
- Buck Raking
- Forage Wagon, chopped at 34mm
- FYM Spreading
- Slurry Spreading with Dribble bar
- Ploughing
- Heavy & Light Cultivations
- Cereal Drilling
- All Aspects of Trailer work
- Tractor & Man Available with Lots of experience

Give us a call to get the wheels turning!

**FINISHING CATTLE? GROWING CATTLE? FEEDING SHEEP?**

**BERRYSTOCK FEEDS**



Do you want **HIGH PERFORMANCE, COST EFFECTIVE, FULLY ASSURED and COMPLETE FEEDS?** Then contact **BERRYSTOCK FEEDS:**

Tel: 01788 890320 E-Mail: [john@berryfieldsfarm.co.uk](mailto:john@berryfieldsfarm.co.uk) Web: [www.berrystockfeeds.co.uk](http://www.berrystockfeeds.co.uk)  
 BERRYFIELDS FARM, DAVENTRY, NN11 8NP

**T.A.R HIRE**

**FOR HIRE:**

- 10 & 14 TON REAR MUCK SPREADERS
- 12 TON TRAILERS WITH SILAGE SIDES
- ROAD SWEEPER
- FLAT TRAILERS
- GRASS TOPPERS
- CONTRACT MUCK SPREADING SERVICES



**CONTACT:**

**DAVENTRY (ROB) – 07801791212**  
**HINCKLEY (ALAN) - 07802951179**

# RFM

**THE MIDLANDS MART**

—RUGBYFARMERSMART.COM—

## **FORTHCOMING SALES**

**THURSDAY 19TH AUGUST**

**MORNING SALE OF STORE SHEEP FOLLOWED BY  
STORE CATTLE**

**Vendors who are wishing to sell stock  
please feel free to contact:**

Tom Wrench - 07774 723758

Gareth Doyle- 07902 330623

Tim Webster- 07437 101163

who will gladly make

**A FREE ON FARM VISIT & VALUATION**



**Follow us on social media:**

Facebook & Twitter - @RFMMidlandsMart

Instagram - rugbyfarmersmartltd